



Folly View Primary School

Executive Headteacher: Mr J Rubba
Head of School: Mrs J Baird
Preston Place, Faringdon. SN7 7XE
Tel: 01367 240655
E-mail: office@fvp.cambrianlt.org



25th November 2024

Dear Parents/Carers,

What a busy few weeks it has been in school! We had great fun celebrating Odd Socks Day, Anti-Bullying week and Children in Need Day. We commemorated Remembrance day on 11th November with a whole school assembly with a visitor and then the children observed a minute silence after Mrs Dullforce played the Last Post. We were very proud of how well the children behaved.

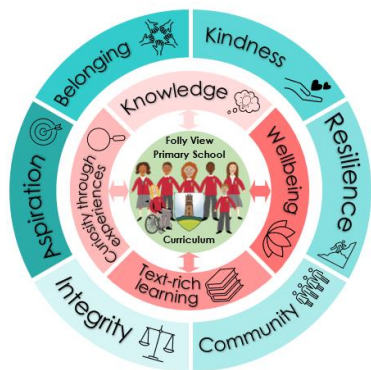


The children across the school have been busy with their learning. For information about your child's curriculum and learning, please have a look at the year group pages on our website.

[Class Pages | Folly View Primary School](#)

The next few weeks will be busy with events leading up to Christmas and the end of term. We sent out a separate letter with information about Christmas performances and events last week. If you did not receive a copy, please contact the office.

School Value of the Term



At Folly View, we have six core values that shape and encompass everything we do at school. Each term we focus on one of our values and help the school community to develop and demonstrate these values through assemblies, PSHE lessons and class discussions. Our school value for this term is Kindness.

At Folly View Primary, we are committed to promoting kindness. We believe that learning kindness is one of the most important things our children can



achieve. We have been learning in school about how we can show kindness to others and kindness can spread like a ripple effect. We listened to a song called Kindness Boomerang, which the children loved and portrays how one simple act can change lives!

Kindness Club



We love to recognise acts of kindness from our children, and parents, carers and teachers can acknowledge these by nominating a child to join our Kindness Club. This can be for a kindness shown in school or outside of school. When a child is

nominated for an act of kindness, their name will be added to our kindness tree in the hall.

All you have to do is follow the link below to nominate a child and tell us what they have done to show kindness. The kindness of our children is so often an example to us all!

<https://forms.office.com/e/w5jmVVEWx2?origin=lpLink>

Children in Need 2024



Thank you for everyone who supported our non-uniform day and cake sale. We raised a record amount this year:

£1104.50

Jigsaw – Personal, Social, Health and Emotional Education

This term our Jigsaw Puzzle theme is 'Celebrating Difference' and supports children to recognise and celebrate our differences as individuals. You can see the full Jigsaw programme by following the link below to the school website.

<https://www.follyviewprimary.co.uk/pshe/>



Odd Socks Day and Anti-Bullying Week

Thank you for your support with Odd Socks Day and the start of Anti-bullying week.



The theme of Anti-bullying week this year was 'Choose Respect.' Choose Respect came about following consultation with teachers and pupils by the Anti-Bullying Alliance which coordinates Anti-Bullying Week every year in

England, Wales and Northern Ireland. Teachers and children wanted a theme that empowered them to do something positive to counter the harm and hurt that bullying causes.

Safeguarding

One of our most significant responsibilities at school is to safeguard the children in our care. We have a strong culture of promoting the wellbeing of all our children and part of this is to have designated staff who support and manage safeguarding for our school.

These are:

Designated Safeguarding Lead – Mrs Jo Baird

Deputy Designated Safeguarding Leads – Mrs Helen Cox,
Mrs Sonja Spence and Mrs Kate Morris.



Please note that if you have a concern about any child or family, you can make a referral directly to the Oxfordshire Multi-Agency Safeguarding Hub (MASH). They can be contacted on 0345 050 7666

Breakfast Club



Our Breakfast Club continues to run, every morning from 7.30am! If you have not booked a place and are still interested, we do have some further spaces and you can make your booking through the school office, on office@fvp.cambrianlt.org

Key Dates

Monday 9th Dec	KS1 Christmas Performance - PM
Tues 10th Dec	KS1 Christmas Performance - AM
Tues 10th Dec	Year 5 Assembly 2.45pm
Thurs 12th Dec	Sunflower Christmas Performance
Thurs 12th Dec	Reception Christmas Performance PM
Fri 13th Dec	Reception Christmas Performance AM
Tues 17th Dec	Sunflower Christmas Party
Wed 18th Dec	Christmas Jumper Day and Christmas Lunch
Wed 18th Dec	Festive Folly View 3.30-5pm
Thurs 19th Dec	Rock Steady Concert 9am
Fri 20th Dec	School finishes at 1.15pm
Mon 6th Jan	School Closed for INSET
Tues 7th Jan	School reopens for Term 3 at 8.45am

Kind regards,

Mrs Jo Baird and the FVP Team

★ **NON-UNIFORM DAY** **THURSDAY 28TH NOVEMBER**

★ **Dress up in your own clothes In** ★
return for a JOLLY JAR of goodies!

Fill a clean jar with something ★
child friendly!

(For example, stickers, sweets, bubbles, bouncy balls,
candy canes, party bag toys)

MAKE IT FESTIVE AND FUN! ❄️



★ **These will be part of our jar tombola at**
The Old Crown Christmas Market
(carpark of The Old Crown Coaching Inn)
as part of Festive Faringdon on 30th November.

Please bring in jars on 28th or before!



FESTIVE FOLLY VIEW

WEDNESDAY 18TH DECEMBER

3.30PM – 5.00PM

FOLLY VIEW PRIMARY SCHOOL

Come and join us for a festive celebration, warming refreshments & some last-minute gift buying.



Mulled wine 🍷 mince pies 🥧 hot chocolate 🍫 singing performances by pupils 🎤 gift stalls

PLUS a raffle with vouchers for Didcot Railway Centre, Partyman World of Play and Laser Kombat...and much, much more!

Interested in having a stall at the event? We'd love you to get involved.

Please email: follyviewfriends@gmail.com

