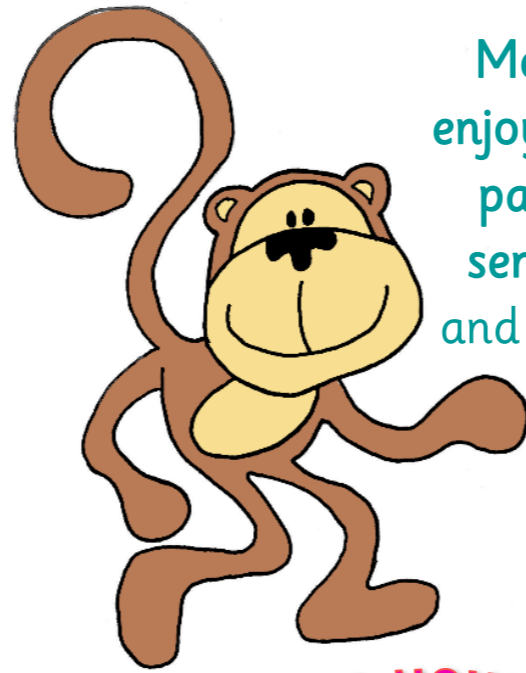
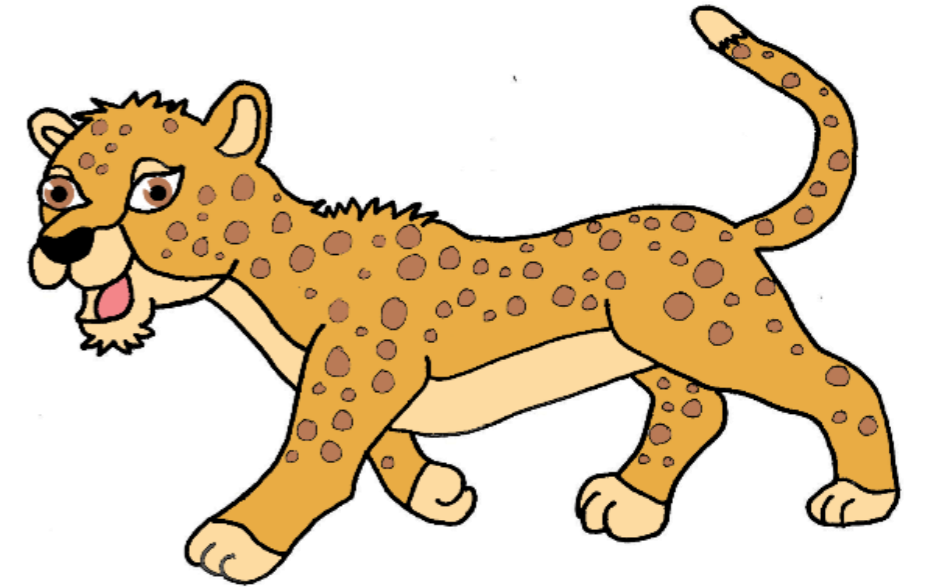


Andy Ant is supportive, cooperative, and collaborative. He negotiates, compromises, works in partnership, uses teamwork, and appreciates others.

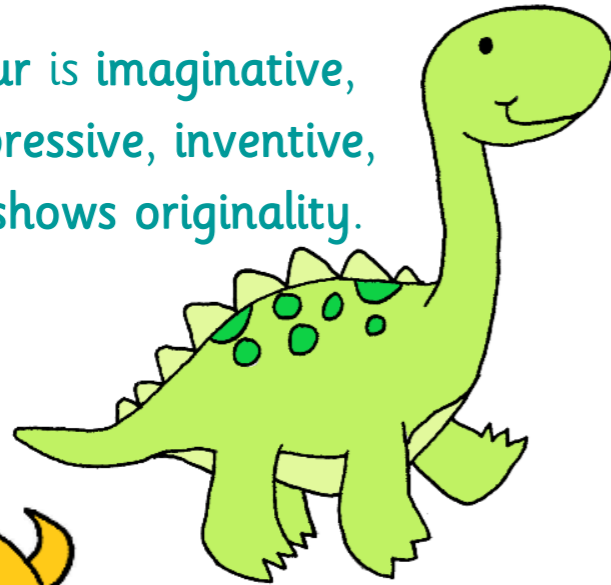


Monty Monkey has enjoyment, enthusiasm, passion, eagerness, sense of satisfaction and engagement when learning.

Mo the Cheetah is motivated to participate, works independently and endeavours to strive and complete tasks.



Daisy Dinosaur is imaginative, innovative, expressive, inventive, creative, and shows originality.



*Don't forget to use your learning muscles!*

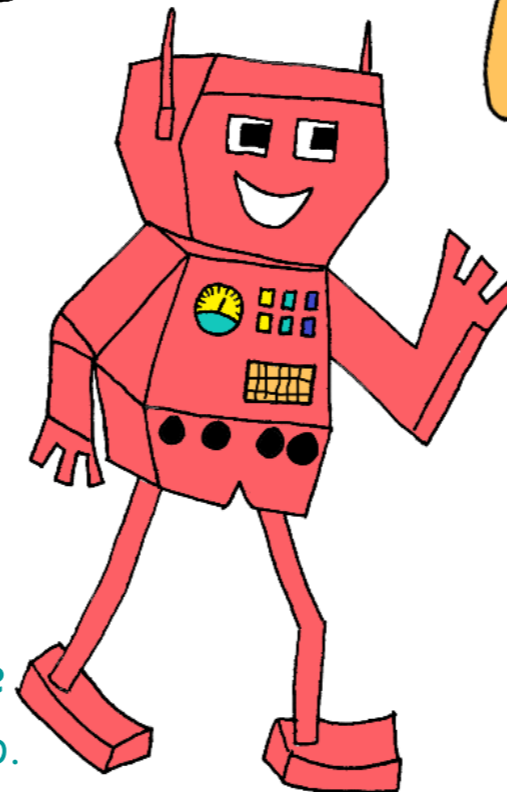


Olga Owl concentrates, is attentive, focused, engrossed, and detail-orientated when learning.



George the Giant keeps growing and improving, making progress by advancing, developing, progressing, revising and expanding his knowledge and understanding.

Raj the Robot uses resilience, perseverance, tenacity, endurance, determination, steadfastness and persistence to keep going and not give up.



Maggie Meerkat is curious, intrigued, inquisitive, and investigative as she questions, examines, inspects, scrutinises and analyses the knowledge she has discovered.

